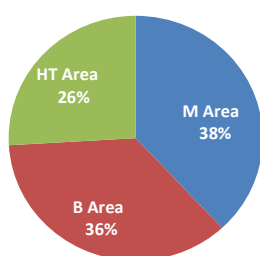
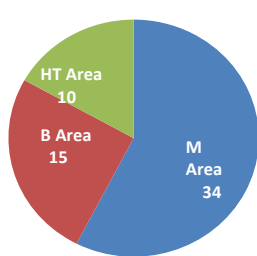


Academic Activity Summary for 2012-2013

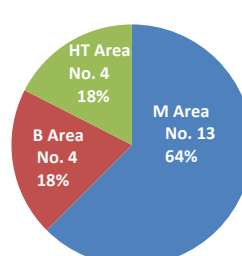
Percentage of Enrollment by Areas



Number of MDiv Courses by Area



Number of professors teaching in each area: faculty and adjunctive



Total Number of M.Div. courses: 59

Enrollment Comparison by Academic Year

	2008-2009		2009-2010		2011-2012		2012-2013	
	Fall	Spring	Fall	Spring	Fall	Spring	Fall	Spring
No. courses	28	31	29	27	28	32	27	24
Enrollment	347	313	270	295	297	265	243	206
TOTAL enroll	660		565 (↓14%)		562 (↓0.5%)		449 (↓20%)	

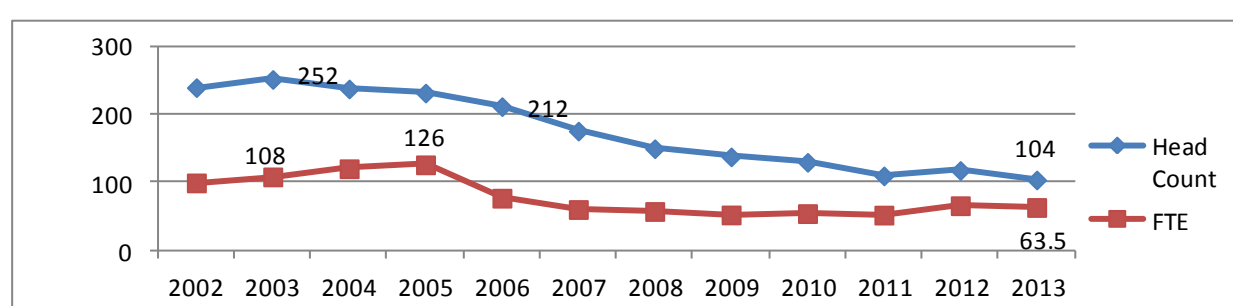
*M.Div. only. Two professors were on sabbatical during the 2009-2010 academic year. Several adjunctive taught courses were cut during the spring of 2009-2010. Independent Studies/tutorials/theses are not included in the courses/enrollment data. For 2012-2013, there was an increase in the number of independent studies (see table at bottom of report). Since 2009 there has been a 32% decrease in enrollment.

The Impact of Adjunctive Faculty on Curricular Activity*

	Number of faculty		Courses Taught		Average Class Size		Total Enrollment		As % of total enroll	
	2011-12	2012-13	2011-12	2012-13	2011-12	2012-13	2011-12	2012-13	2011-12	2012-13
Adjunctive Faculty	17	17	27	15	10.4	7.2	283	108	50%	21%
Elected Faculty	8	10	26	40	16.0	12.1	417	413	74%	79%

*M.Div. only. Faculty percentage includes independent studies and tutorials. With the addition of two faculty members in 2012 the elected Faculty carries a higher percentage of coursework than the previous year, reducing the amount of adjunct faculty-taught courses (down to 21% in 2013-14).

Enrollment (Head Count) and FTE Trend 2001-02 to 2012-13



The enrollment trend in the MDiv continues on a downward trend, with 2013 seeing the lowest headcount and FTE in several years. In addition to lower matriculation, the impact of an increasing number of part-time vs. full-time students taking fewer courses, and a lower retention rate has had a negative impact.

Enrollment in online courses as percentage of total M.Div. enrollment:

	No. courses	Percentage
2012-2013	6	11.9%
2011-2012	5	9.9%
2009-2010	6	9.6%
2008-2009	7	9.5%

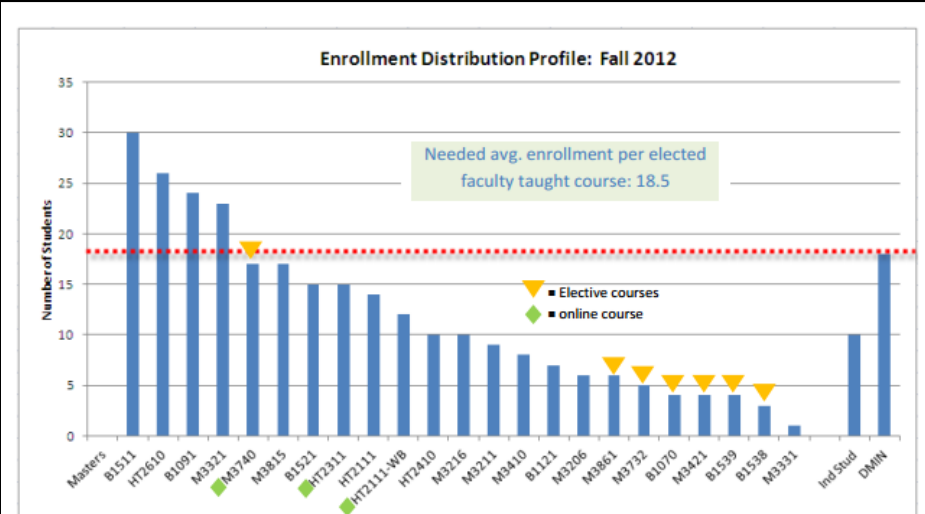
The number of online courses comprised 9.8% of total M.Div. course offerings in 2012-2013.

Enrollment in Independent Studies as percentage of total M.Div. enrollment:

	No. Studies	Percentage
2012-2013	17	4.4%

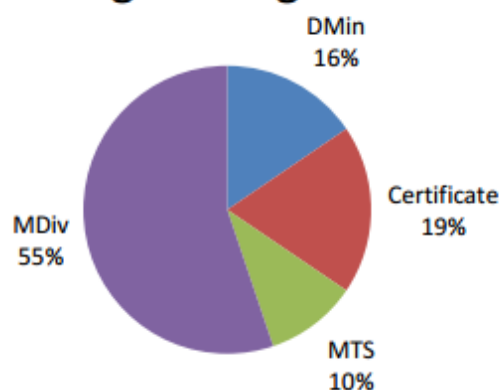
A total of 23 students in Fall/Spring term. While 2012-13 saw the highest number of independent studies in past four years (17), they represent under 5% of total credit enrolments.

Data source: Populi



- Average course enrollment needed in elected faculty taught courses: 18.5
- Note the clustering of elective courses. Given the current student body size and curriculum structure, elective courses are not sustainable.
- M3740, while an "elective" is a concentration course and satisfies the core requirement for a Christian formation course. Meaning, students can take it as a "core" course.
- It is worth noting the enrollment profile between online courses and campus elective courses.
- In fall 2012 online enrollment was 15.6% of total course enrollment in four (4) online courses.
- Four online courses yielded 15% of total enrollment (one online course is the supervised ministry group).
- DMin enrollment number reflects TOTAL activities for fall 2012: seminars, FBS, DMin courses, etc. Currently the total DMin enrollment in all program academic activities just meets the minimum enrollment for ONE elected faculty course. This program must continue to develop for sustainability.

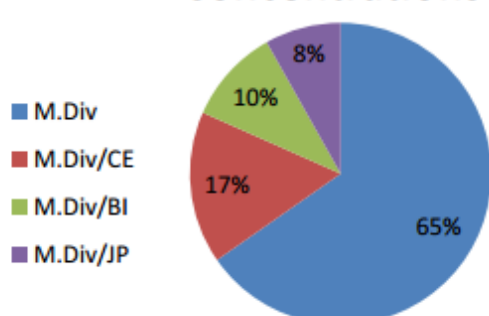
Degree Programs



Degree Program Profile:

- The majority of students are matriculated in the M.Div. program (55%).
- The MTS degree program has 10% of the total student matriculation; six (6) students enrolled.
- D.Min. students comprise 16% of the total student matriculation; nine (9) enrolled. A new cohort is formed for 2014-2015.
- The Certificate of Theological Studies Program has eleven (11) students enrolled.

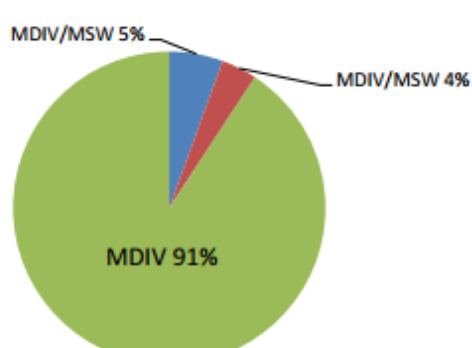
Concentrations



Concentrations Profile:

- Within the M.Div. degree 65% of students have not declared a concentration.
- The Biblical Interpretation has 10% of students.
- The Christian Education concentration is the largest concentration with 17% of students.
- The Justice and Peacebuilding concentration has 8% of students.

MDiv and Dual Degrees



MDiv and Dual Degree Profile:

- 9% of M.Div. students are in the dual degree programs.
- 5% (3) are in the MDiv/MSW program.
- 4% (2) are in the MDiv/MS program.
- The remaining MDiv students (91%) under this profile are in concentrations or undeclared MDiv.